

RACE NEWSLETTER

15/06/2020



GOS VER: 6.040 build 0001

TRUCK

NEW : FLASH_0786 CUMMINS - AGRALE TRUCK CONTINENTAL CM2220C CAN R/W

AGRALE A7500 3.8L ISF 112kW CM2220C

NEW : FLASH_0787 CUMMINS - IVECO TRUCK CM554 CAN R/W

IVECO ACCO 285 8.3L 210kW CM554

NEW : FLASH_0788 CUMMINS - TEMSA TRUCK RECON CM2350A CAN R/W

TEMSA BUS MD9 LE 6.7L 182kW CM2350A

******* NEW CABLE F32GN075 *******

Sample of vehicles on which is possible to use the F32GN075 with Furukawa 6 pin diagnostic connector.

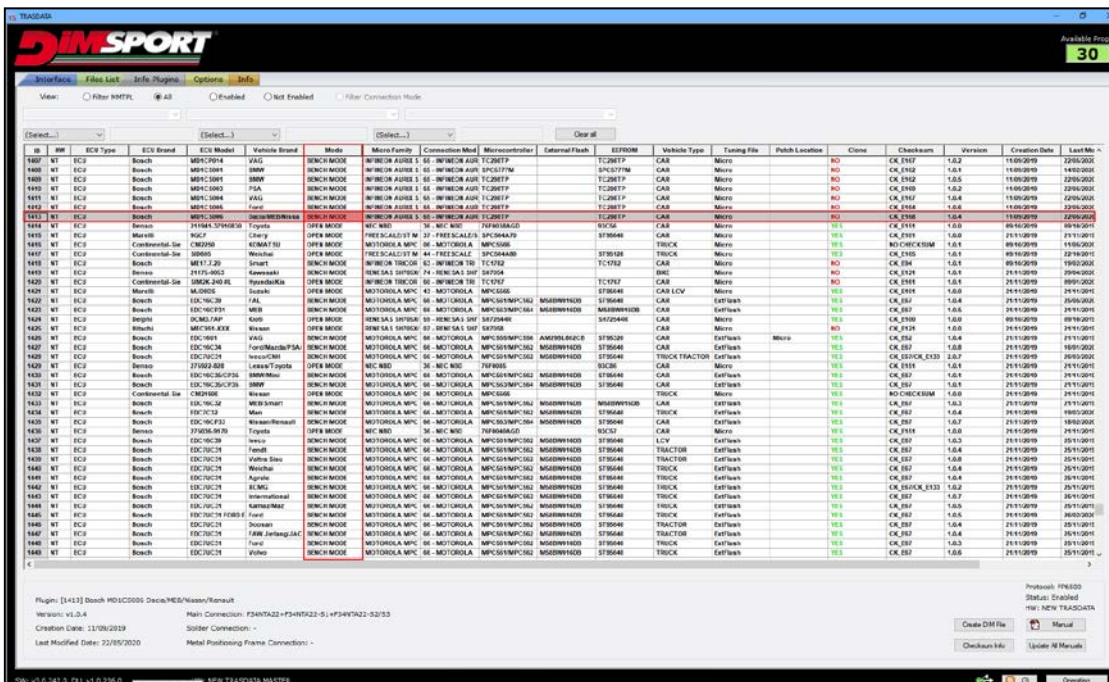
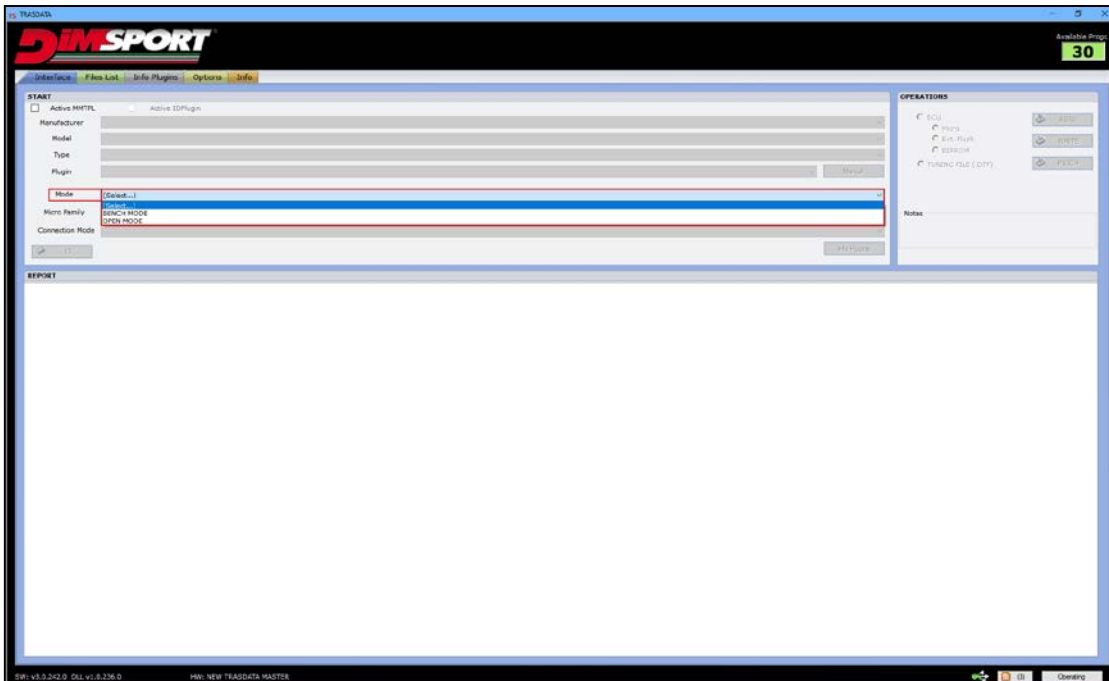
ARGO XTV FRONTIER 700 6X6 0.7L 17kW MT05
BENELLI 502C 0.5L 35kW MT05
BENELLI 752S 0.75L 56kW MT05
BENELLI BN 125 0.125L 8kW MT05
BENELLI BN 302 0.3L 28kW MT05
BENELLI BN 600 0.6L 60kW MT05
BENELLI IMPERIALE 400 0.4L 16kW MT05
BENELLI LEONCINO 250 0.25L 19kW MT05
BENELLI TORNADO NAKED T 0.125L 8.2kW MT05
BENELLI TRK 251 0.25L 18kW MT05
BENELLI TRK 500 0.5L 35kW MSE6.0
CF MOTO CFORCE 450 0.45L 22kW MSE6.0
CF MOTO CFORCE 520 0.5L 26kW MSE6.0
CF MOTO CFORCE 600 0.58L 30kW MSE6.0
CF MOTO ZFORCE 800 0.8L 45kW MT05
CF MOTO ZFORCE 850XC 0.8L 47kW MT05
CF MOTO X8 TERRALANDER 800 0.8L 45kW MT05
MACABOR SHIFTER MC1 125 0.125L 9kW MT05
QUADRO QOODER 400 0.4L 24kW MT05
ZHONGNENG ZNBD125 BN125 0.125L 5kW MT05
ZONGSHEN MOTOR RX3 0.25L 19kW MT05

New TRASDATA

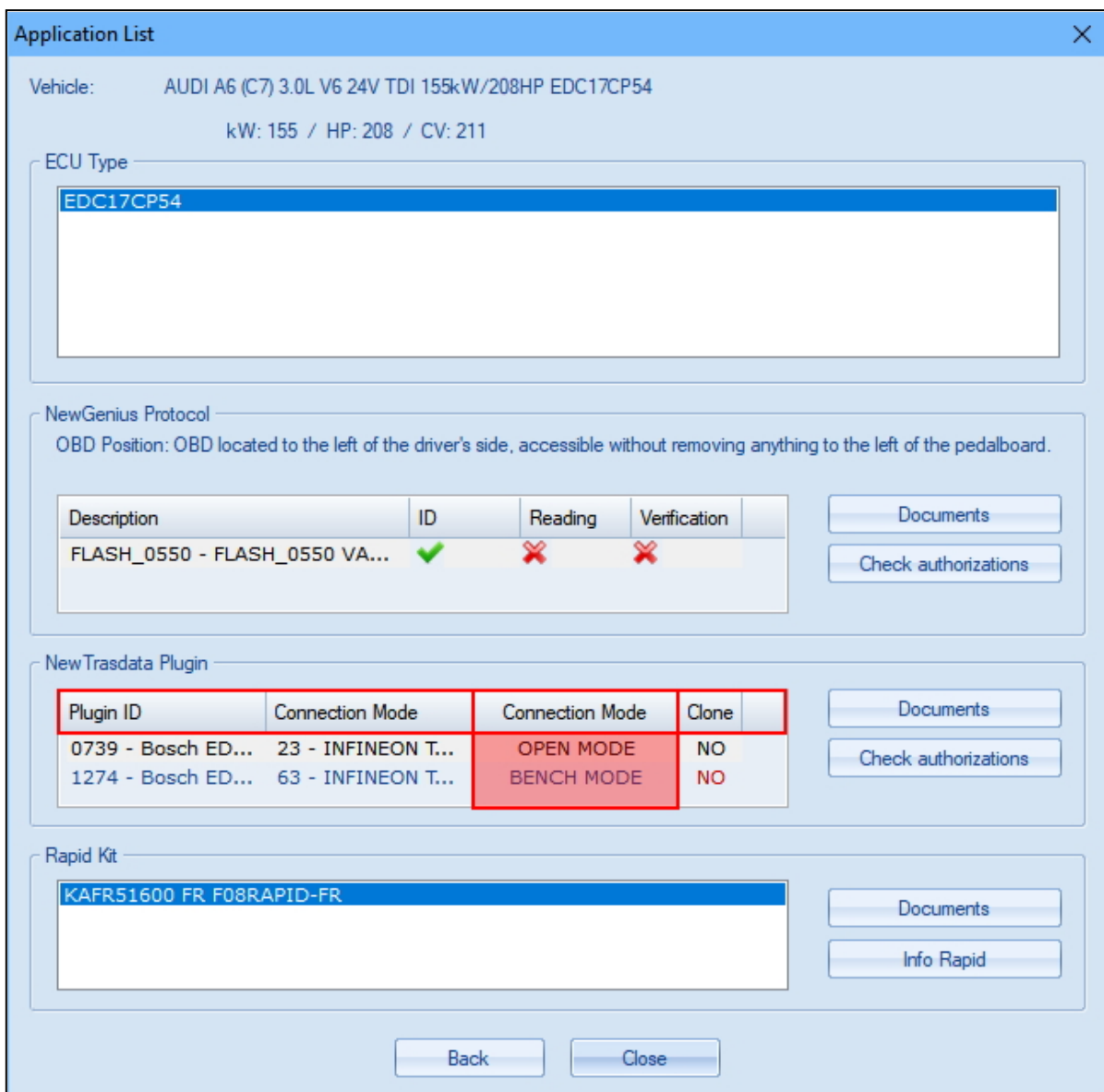
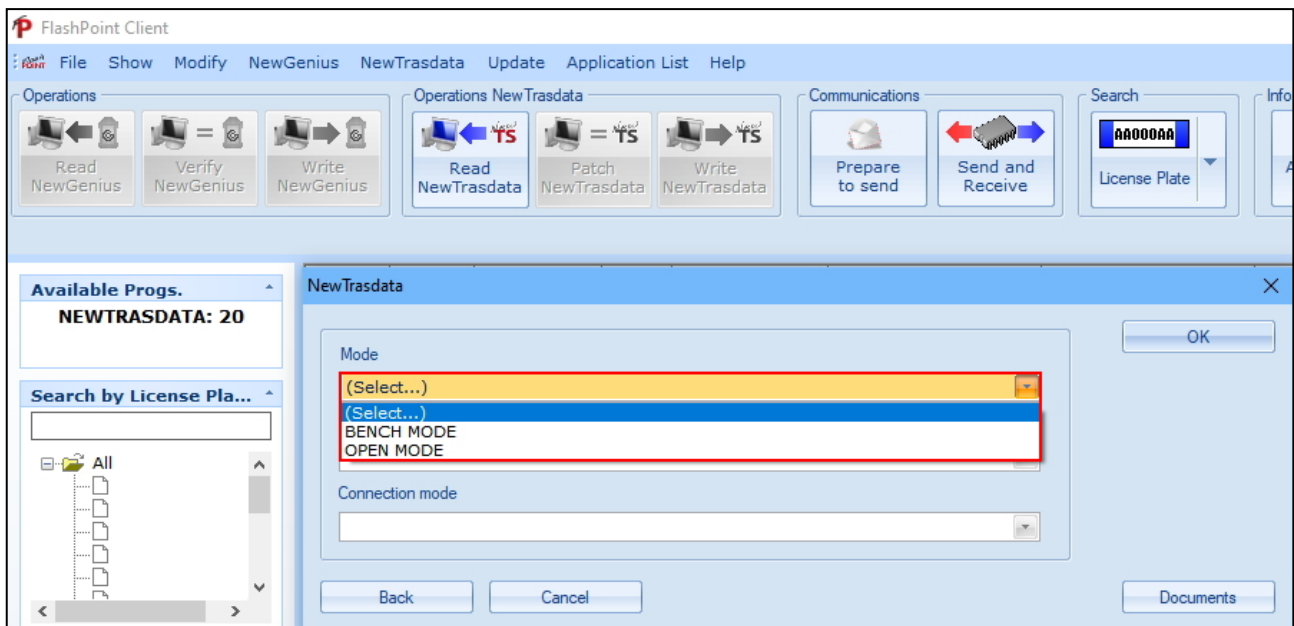
SW : 3.0.242.0 DLL : 1.0.236.0 FW: 16.23 build 0001

NEW FEATURE BENCH MODE - OPEN MODE

From this New Trasdata sw version and FlashPoint sw version 7.6.529 the BENCH & OPEN selection mode is available. This feature allows to rapidly find and select the preferred connection mode:
 BENCH MODE → connection WITHOUT ECU opening (through the ECU connector ONLY)
 OPEN MODE → connection WITH ECU opening (connection on the ECU motherboard)



This new filter allows to find quickly the plugin with the desired connection mode (BENCH or OPEN) and to communicate faster with the connected ECU.



INFINEON TRICORE CPU

NEW : 73 - INFINEON TRICORE DELPHI TC17XX DSM MEB

DELPHI CRD3.40 (SOLENOID) TC1797 MEB Diesel

NEW – plugin 1547

All the vehicles MEB with ECU CRD3.40 (SOLENOID) already supported with the plugin 0808

DELPHI CRD3.50 (PIEZOTEC) TC1797 MEB Diesel

NEW – plugin 1548

All the vehicles MEB with ECU CRD3.50 (PIEZOTEC) already supported with the plugin 0809

DELPHI CRD3.Ex/Fx/P.xx TC1793 MEB Diesel

NEW – plugin 1549

All the vehicles MEB with ECU CRD3.E (PIEZOTEC) already supported with the plugin 0935

NEW : 78 - INFINEON TRICORE SIEMENS SSM BENCH BMW

CONTINENTAL-SIEMENS-VDO MSD80 TC1796 BMW Petrol

NEW – plugin 1574

All the vehicles BMW with ECU MSD80 already supported with the plugin 0986

CONTINENTAL-SIEMENS-VDO MSV90 TC1796 BMW Petrol

NEW – plugin 1575

All the vehicles BMW with ECU MSV90 already supported with the plugin 0988

CONTINENTAL-SIEMENS-VDO MSD85.1/MSD85.3 TC1796 BMW Petrol

NEW – plugin 1576

All the vehicles BMW with ECU MSD85.1/MSD85.3 already supported with the plugin 0989

CONTINENTAL-SIEMENS-VDO MSV80 TC1796 BMW Petrol

NEW – plugin 1577

All the vehicles BMW with ECU MSV80 already supported with the plugin 0990

CONTINENTAL-SIEMENS-VDO MSD81 TC1796 BMW Petrol

NEW – plugin 1578

All the vehicles BMW with ECU MSD81 already supported with the plugin 0991

CONTINENTAL-SIEMENS-VDO MSD87.1/MSD87.2/MSD87.3 TC1796 BMW Petrol
NEW – plugin 1579

All the vehicles BMW with ECU MSD87.1/MSD87.2/MSD87.3 already supported with the plugin 0992

CONTINENTAL-SIEMENS-VDO MSD85.0/MSD85.4 TC1796 BMW Petrol
NEW – plugin 1580

All the vehicles BMW with ECU MSD85.0/MSD85.4 already supported with the plugin 1012

NEW : 80 - INFINEON TRICORE SIEMENS SSM BENCH MEB

CONTINENTAL-SIEMENS-VDO SIM271DE2.0 TC1796 MEB Petrol
NEW – plugin 1590

All the vehicles MEB with ECU SIM271DE2.0 already supported with the plugin 0993

CONTINENTAL-SIEMENS-VDO SIM271KE2.0 TC1796 MEB Petrol
NEW – plugin 1591

All the vehicles MEB with ECU SIM271KE2.0 already supported with the il plugin 1008

ADD : 63 - INFINEON TRICORE BOSCH MEDC17 E-GPT ALLBRAND
BOSCH EDC17CP65 TC1793 FORD Diesel
NEW – plugin 1593

FORD F-150 3.0L V6 184kW EDC17CP65

IMPORTANT: K34NTA22/22B kit is required to operate in E-GPT mode

ADD : 65 INFINEON AURIX SAK-TC2XXTP/FREESCALE SPC5777M BOSCH MDG1 E-GPT
ALLBRAND
BOSCH MD1CP006 TC298TP FORD Diesel
NEW – plugin 1586

FORD F-250 6.7L V8 32V TD SUPERDUTY 336-354kW MD1CP006

FORD F-450 6.7L V8 32V TD SUPERDUTY 336-354kW MD1CP006

IMPORTANT: K34NTA22/22B kit is required to operate in E-GPT mode

FREESCALE/ST MPC56XX SPC56X CPU

ADD : 44 FREESCALE MPC56XX BAM
MARELLI 9GC SPC564A70 CHERY Petrol
NEW – plugin 1581

CHERY INTERNATIONAL X22 1.5L VVT 79kW 9GC
CHERY INTERNATIONAL TIGGO 3X 1.5L VVT 79kW 9GC

NEW : 79 FREESCALE MPC56XX CONTINENTAL SSM BENCH DUCATI
CONTINENTAL-SIEMENS-VDO M4D SPC564A70 DUCATI Petrol
NEW – plugin 1584

All the vehicles DUCATI with ECU M4D already supported with the serial protocol flash_0735

NEC NBD CPU

ADD : 36 NEC NBD
DENSO 211941-45800932 76F0085 TOYOTA Petrol
NEW – plugin 1583

TOYOTA YARIS (XP150) 1.2L VVT-iE 68kW 211941-45800932

DENSO 275036-6941 76F0039GD TOYOTA Petrol
NEW – plugin 1585

TOYOTA ALPHARD (AH20) 2.4L 120kW 275036-694176F0039GD

RENESAS SH705X/SH725XX CPU

ADD : 07 RENESAS SH705X/SH725XX AUD
DENSO 21175-1224 SH7058 KAWASAKI Petrol
NEW – plugin 1587

KAWASAKI Z900 0.9L 92kW 21175-1224

MPC500 CPU

ADD : 66 MOTOROLA MPC5XX BOSCH EDC16X/MED9.X E-GPT ALL BRAND

BOSCH EDC16C39 MPC561/MPC562 HYUNDAI/KIA Diesel

NEW – plugin 1588

All the vehicles HYUNDAI/KIA with ECU EDC16C39 already supported with the plugin 072

IMPORTANT: K34NTA22/22B kit is required to operate in E-GPT mode

MITSUBISHI MH7XXX/MH8XXX CPU

ADD : 08 MITSUBISHI MH7XXX/MH8XXX

DENSO 21175-1469 MH8115F KAWASAKI Petrol

NEW – plugin 1589

KAWASAKI NINJA H2 1.0L 147kW 21175-1469

| PLG ID | MODE | ECU BRAND | ECU MODEL | VEHICLE BRAND | CONNECTION MODE | MICRO | EEPROM | CATEGORY |
|--------|------------|---------------------------|--------------------|---------------|---|--------|-----------------|----------|
| 1547 | BENCH MODE | Delphi | CRD3.40 (SOLENOID) | MEB | 73 - INFINEON TRICORE DELPHI TC17xx DSM MEB | TC1797 | TC1797/25L C256 | CAR |
| 1548 | BENCH MODE | Delphi | CRD3.50 (PIEZOTEC) | MEB | 73 - INFINEON TRICORE DELPHI TC17xx DSM MEB | TC1797 | TC1797/25L C256 | CAR |
| 1549 | BENCH MODE | Delphi | CRD3.E/P | MEB | 73 - INFINEON TRICORE DELPHI TC17xx DSM MEB | TC1793 | TC1793/25L C256 | CAR |
| 1574 | BENCH MODE | Continental -Siemens- VDO | MSD80 | BMW | 78 - INFINEON TRICORE SIEMENS SSM BENCH BMW | TC1796 | ST95640 | CAR |
| 1575 | BENCH MODE | Continental -Siemens- VDO | MSV90 | BMW | 78 - INFINEON TRICORE SIEMENS SSM BENCH BMW | TC1796 | TC1796 | CAR |

| PLG ID | MODE | ECU BRAND | ECU MODEL | VEHICLE BRAND | CONNECTION MODE | MICRO | EEPROM | CATEGORY |
|--------|------------|---------------------------------|---------------------------------|---------------|--|---------------|---------|----------|
| 1576 | BENCH MODE | Continental -Siemens- VDO | MSD85.1/MS D85.3 | BMW | 78 - INFINEON TRICORE SIEMENS SSM BENCH BMW | TC1796 | ST95128 | CAR |
| 1577 | BENCH MODE | Continental -Siemens- VDO | MSV80 | BMW | 78 - INFINEON TRICORE SIEMENS SSM BENCH BMW | TC1796 | ST95640 | CAR |
| 1578 | BENCH MODE | Continental -Siemens- VDO | MSD81 | BMW | 78 - INFINEON TRICORE SIEMENS SSM BENCH BMW | TC1796 | ST95640 | CAR |
| 1579 | BENCH MODE | Continental -Siemens- VDO | MSD87.1/MS D87.2/MSD 87.3 | BMW | 78 - INFINEON TRICORE SIEMENS SSM BENCH BMW | TC1796 | ST95128 | CAR |
| 1580 | BENCH MODE | Continental -Siemens- VDO | MSD85.0/M SD85.4 | BMW | 78 - INFINEON TRICORE SIEMENS SSM BENCH BMW | TC1796 | ST95128 | CAR |
| 1581 | OPEN MODE | Marelli | 9GC | Chery | 44 - FREESCALE MPC56XX BAM | SPC564A 70 | ST95640 | CAR |
| 1583 | OPEN MODE | Denso | 211941- 45800932 | Toyota | 36 - NEC NBD | 76F0085 | | CAR |
| 1584 | BENCH MODE | Continental -Siemens- VDO | M4D | DUCATI | 79 - FREESCALE MPC56xx CONTINENTAL SSM BENCH DUCATI | SPC564A 70 | | BIKE |
| 1585 | OPEN MODE | Denso | 275036- 6941 | Toyota | 36 - NEC NBD | 76F0039 GD | 93C57 | CAR |

| PLG ID | MODE | ECU BRAND | ECU MODEL | VEHICLE BRAND | CONNECTION MODE | MICRO | EEPROM | CATEGORY |
|--------|------------|---------------------------------|-----------------|-----------------|---|-------------------|---------|----------|
| 1586 | BENCH MODE | Bosch | MD1CP006 | Ford | 65 - INFINEON AURIX SAK- TC2xxTP/FREE SCALE SPC5777M BOSCH MDG1 E-GPT ALLBRAND | TC298TP | TC298TP | CAR |
| 1587 | OPEN MODE | Denso | 21175-1224 | Kawasaki | 07 - RENESAS SH705X/SH72 5XX AUD | SH7058 | | BIKE |
| 1588 | BENCH MODE | Bosch | EDC16C39 | Hyundai/KI A | 66 - MOTOROLA MPC5xx BOSCH EDC16x/MED9. x E-GPT ALLBRAND | MPC561/ MPC562 | ST95640 | CAR |
| 1589 | BENCH MODE | Denso | 21175-1469 | Kawasaki | 08 - MITSUBISHI MH7XXX/MH8 XXX | MH8115F | | BIKE |
| 1590 | BENCH MODE | Continental -Siemens- VDO | SIM271DE2. 0 | MEB | 80 - INFINEON TRICORE SIEMENS SSM BENCH MEB | TC1796 | | CAR |
| 1591 | BENCH MODE | Continental -Siemens- VDO | SIM271KE2. 0 | MEB | 80 - INFINEON TRICORE SIEMENS SSM BENCH MEB | TC1796 | | CAR |
| 1593 | BENCH MODE | Bosch | EDC17CP65 | Ford | 63 - INFINEON TRICORE BOSCH MEDC17 E-GPT ALL BRAND | TC1793 | | CAR |